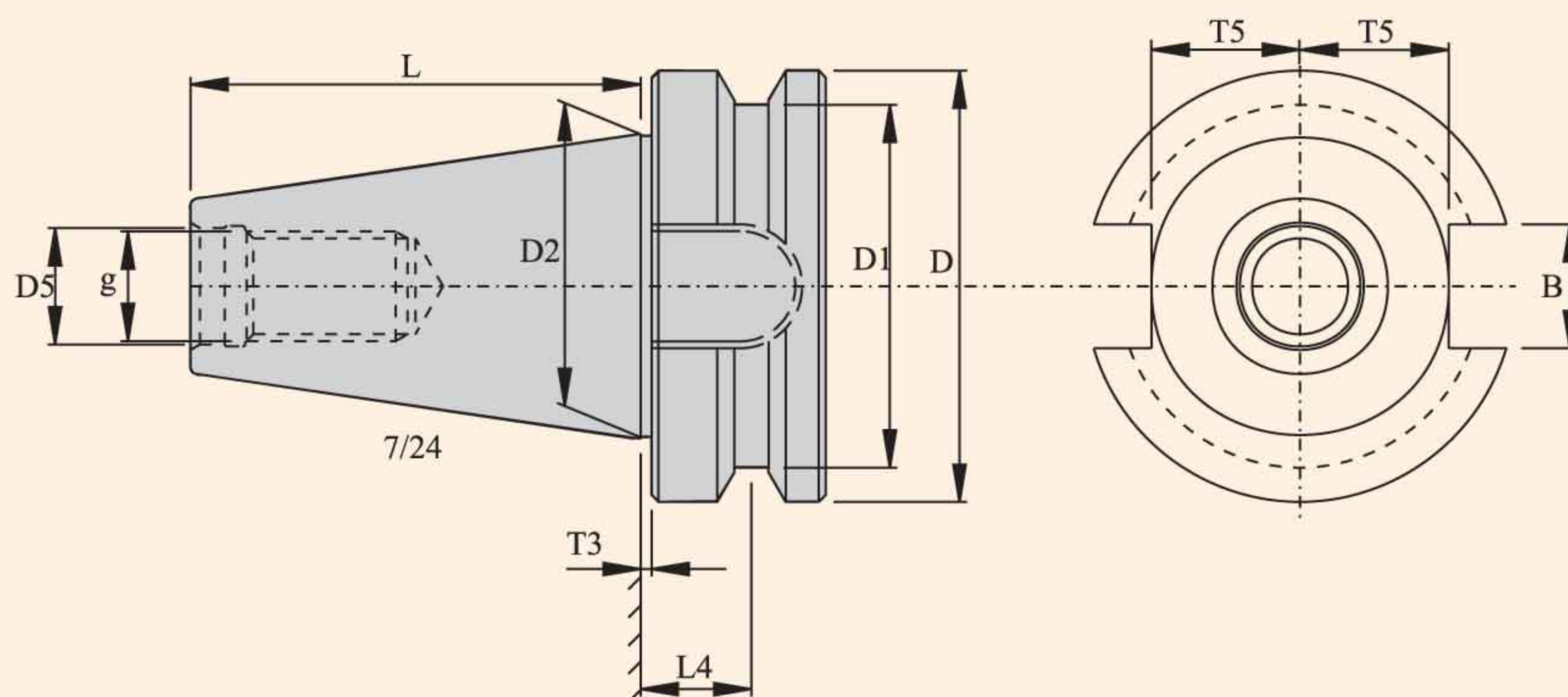


**BT MAS 403 FORM A**

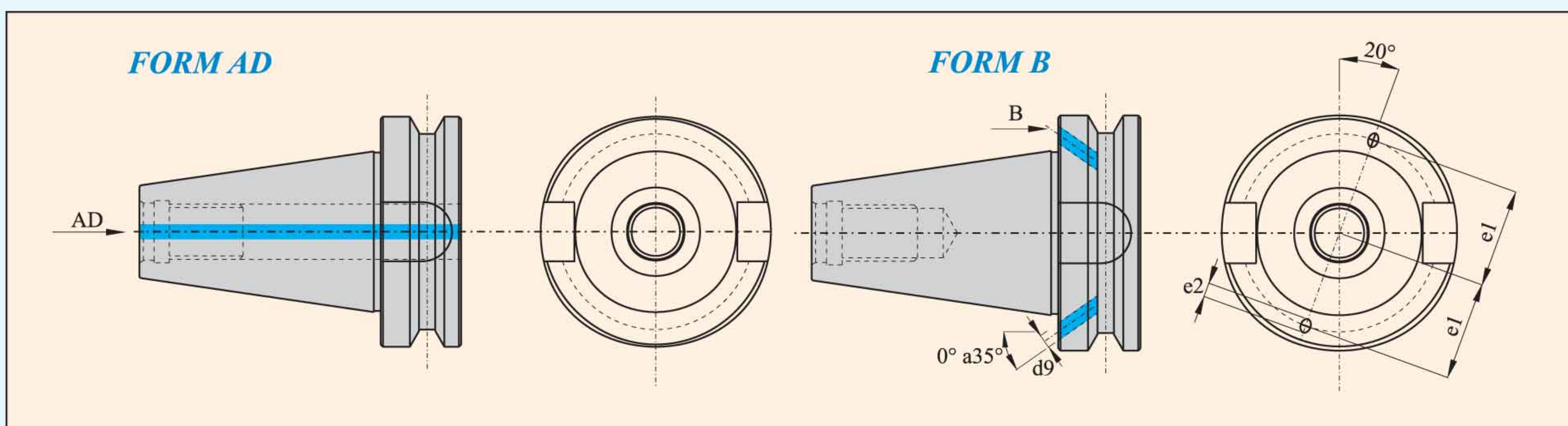
**BT MAS 403**



TAPER	D	D1	D2	L	D5	g	T5	B	T3	L4
30	46	38	31.75	48.4	12.5	M 12	16.3	16.1	2	13.6
40	63	53	44.45	65.4	17	M 16	2.6	16.1	2	16.6
50	100	85	69.85	101.8	25	M 24	35.4	25.7	3	23.2

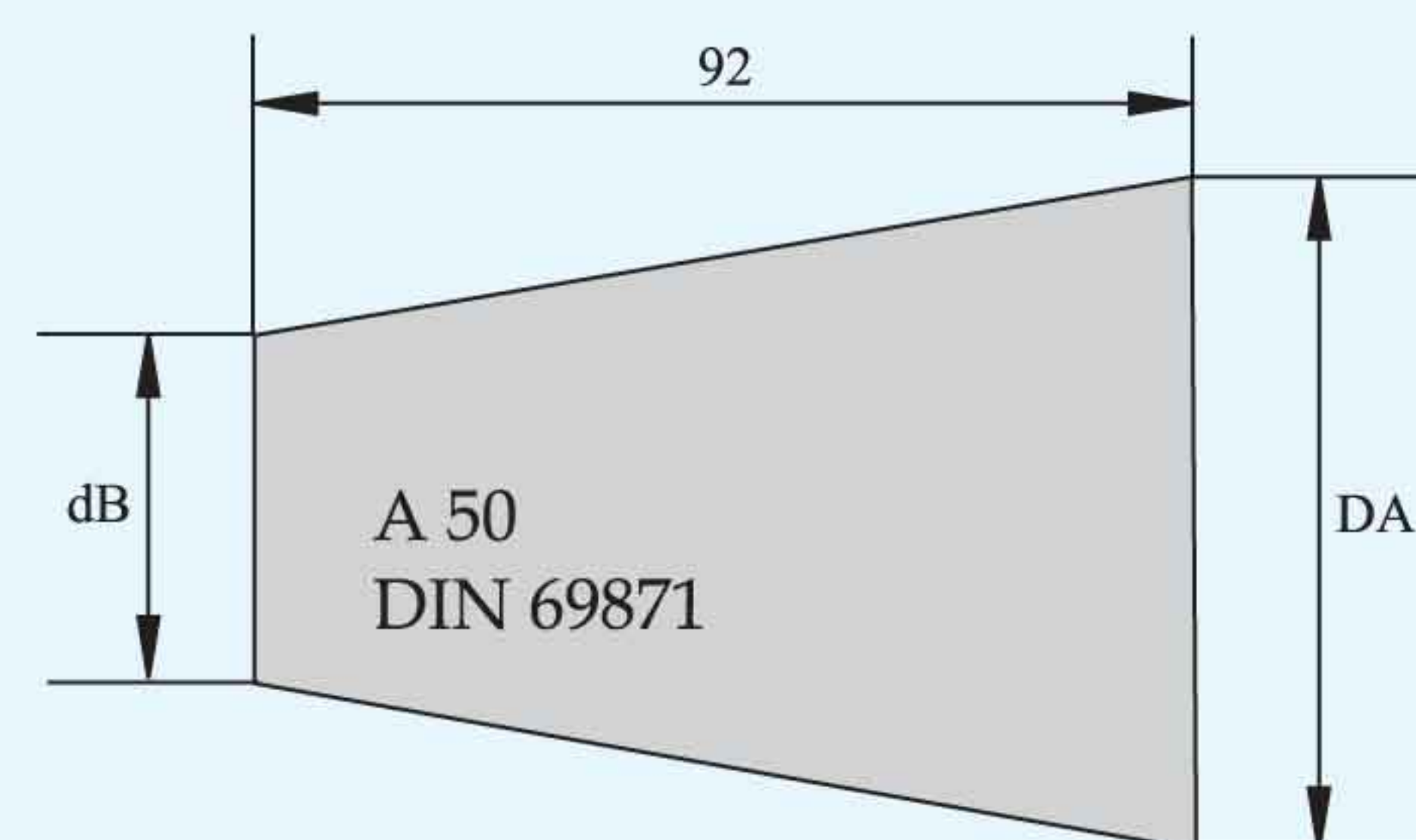
**WITH COOLANT THROUGH CENTRE (FORM AD) AND**

**WITH COOLANT THROUGH FLANGE (FORM B) (Only for Taper 40 & 50 AD+B)**



**KTA TOOL HOLDERS: TECHNICAL INFORMATION**

ISO	L	dA-dB	AT 3
30	42	12,250	+0,002
40	59	17,208	+0,003
50	92	26,833	+0,004



Material : Case Hardened Steel, tensile strength in the core min. 800 N/mm<sup>2</sup>  
Surface Hardness HRC 60 ± 2; C.D. 0.80mm

Accuracy : External Taper Angle [Cone] AT3 DIN 7178 and DIN 2080.  
Runout between Cone and holding Area 0.005mm.

**Balancing of Tool Holder : Additional price for G6.3 12000 RPM**